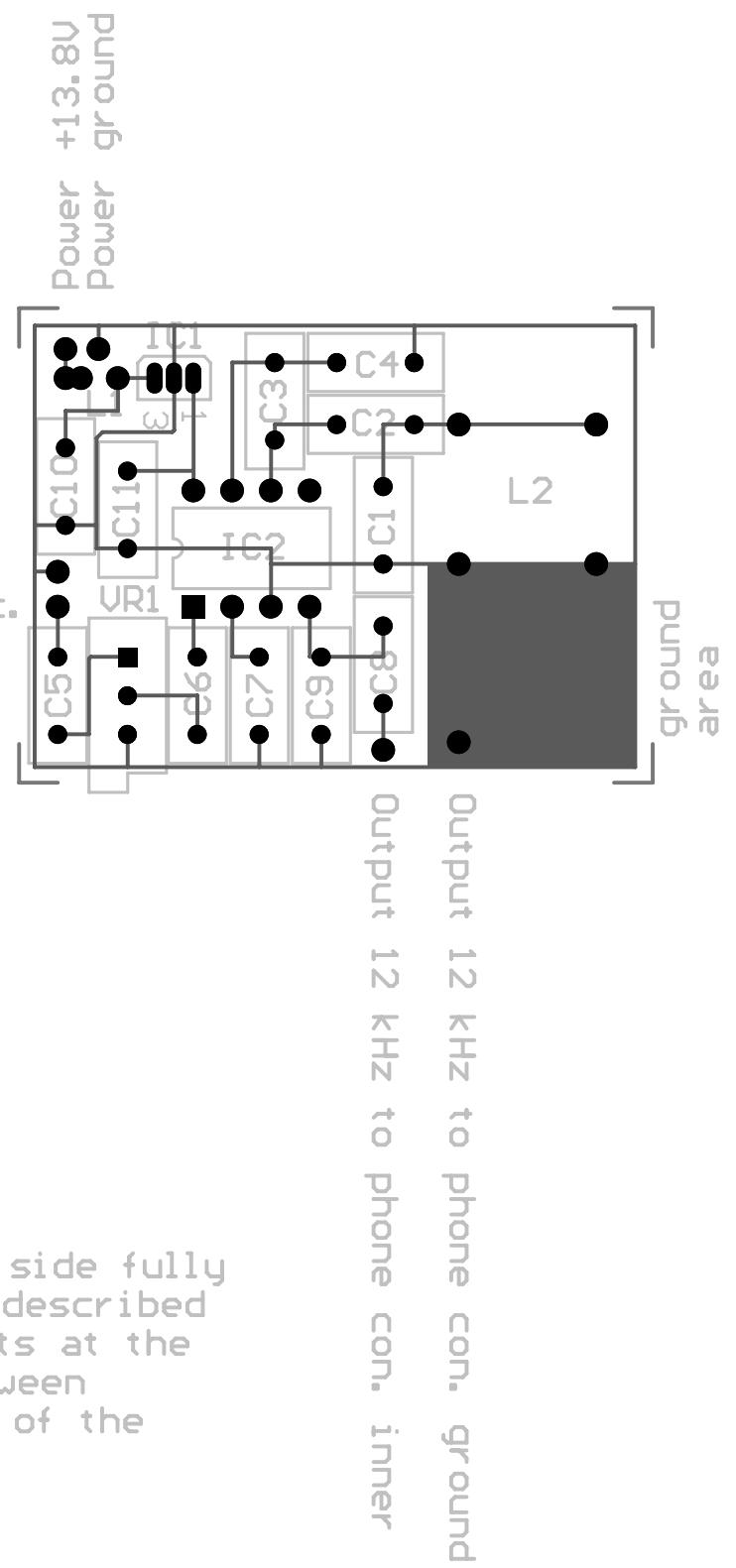


Shield of the 455 kHz IF cable from transceiver
 Signal core of the 455 kHz IF cable from transc.



The PCB has copper on both sides. Keep one side fully covered by the copper and make the circuit described above at the other side. Mount the components at the circuit side and make a good connection between ground (GNG) of the circuit side and ground of the fully covered copper side of the PCB.